



rincon

# RINCON CONSULTANTS, INC.

Environmental Scientists | Planners | Engineers

City of Carmel-by-the-Sea

## Revised Climate Adaptation Goals, Policies, and Actions

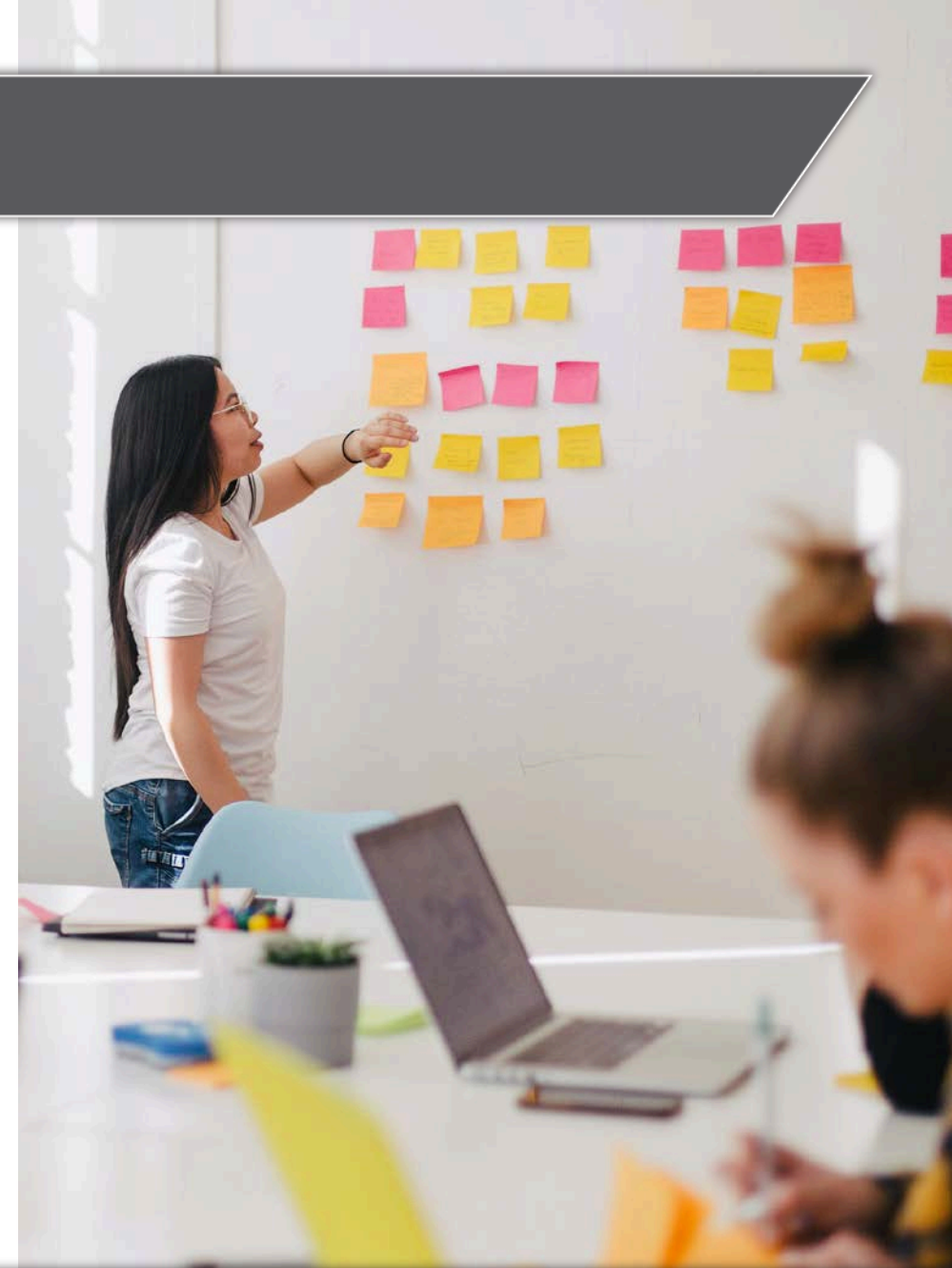
Climate Committee Meeting

- Summary of Comments and Responses
- Revised Potential Adaptation Strategies



# Comment Categories

- Electrification
- Evacuation, traffic, and congestion
- Vulnerable populations
- Tree maintenance and Monterey Pines
- Stormwater runoff and wastewater



# Electrification

- It is noted that members of the Climate Committee would prefer to move these types of strategies to the Climate Action Plan.
- Electrification actions will remain in the list of potential adaptation goals, policies, and actions for the public to weigh in on.



# Evacuation, Traffic, Congestion

- New actions added
  - **Action 1.1.5. Evacuation Access.** Investigate potential congestion issues in the event of an evacuation and develop and maintain a list of residents who may have difficulty evacuating and provide evacuation options for residents with mobility challenges.
  - **Action 1.1.6. Evaluate Evacuation Route Capacity.** Evaluate evacuation route capacity, safety, and viability under a range of emergency scenarios and identify and implement mitigating actions.
  - **Action 1.1.7. Evacuation Alternatives.** Develop and employ evacuation alternatives and/or alternative emergency access routes in neighborhoods that have single ingress/egress.

# Vulnerable Populations

- New actions added
  - **Action 1.2.4. Social Support Network.** Collaborate with the Carmel Foundation and other community-based organizations to develop an inventory of locations with isolated seniors and people with disabilities and develop a plan for a social support network to increase resilience to climate change.
  - **Action 1.2.5. Back-up Power for Vulnerable Populations.** Coordinate with 3CE, PG&E, and emergency management services to establish backup power and emergency grid shutdown protocols that protect the most vulnerable populations.

# Tree maintenance and Monterey Pines

- Revised action 2.1.2.
  - **Action 2.1.2. Increase Forest Resilience.** Update the Forest Management Plan to:
    1. Review and consider modifications to the preferred urbanized tree species that would result in improved resilience in the context of the expected climate of the second half of the century, reduce wildfire hazard, **and that takes into account aesthetics and the ecological benefits of natives or near-native (e.g., native species from the Southwestern US or Mexico would likely be preferred to European species).**
    2. Include planting **and maintenance** guidelines to improve tree health, particularly in the public right-of-way
    3. Incorporate tree species that have greater drought and wildfire resistance
    4. In addition to drought-tolerant landscaping, include landscaping guidelines that reduce wildfire hazard on private property.
    5. Enhance carbon sequestration potential

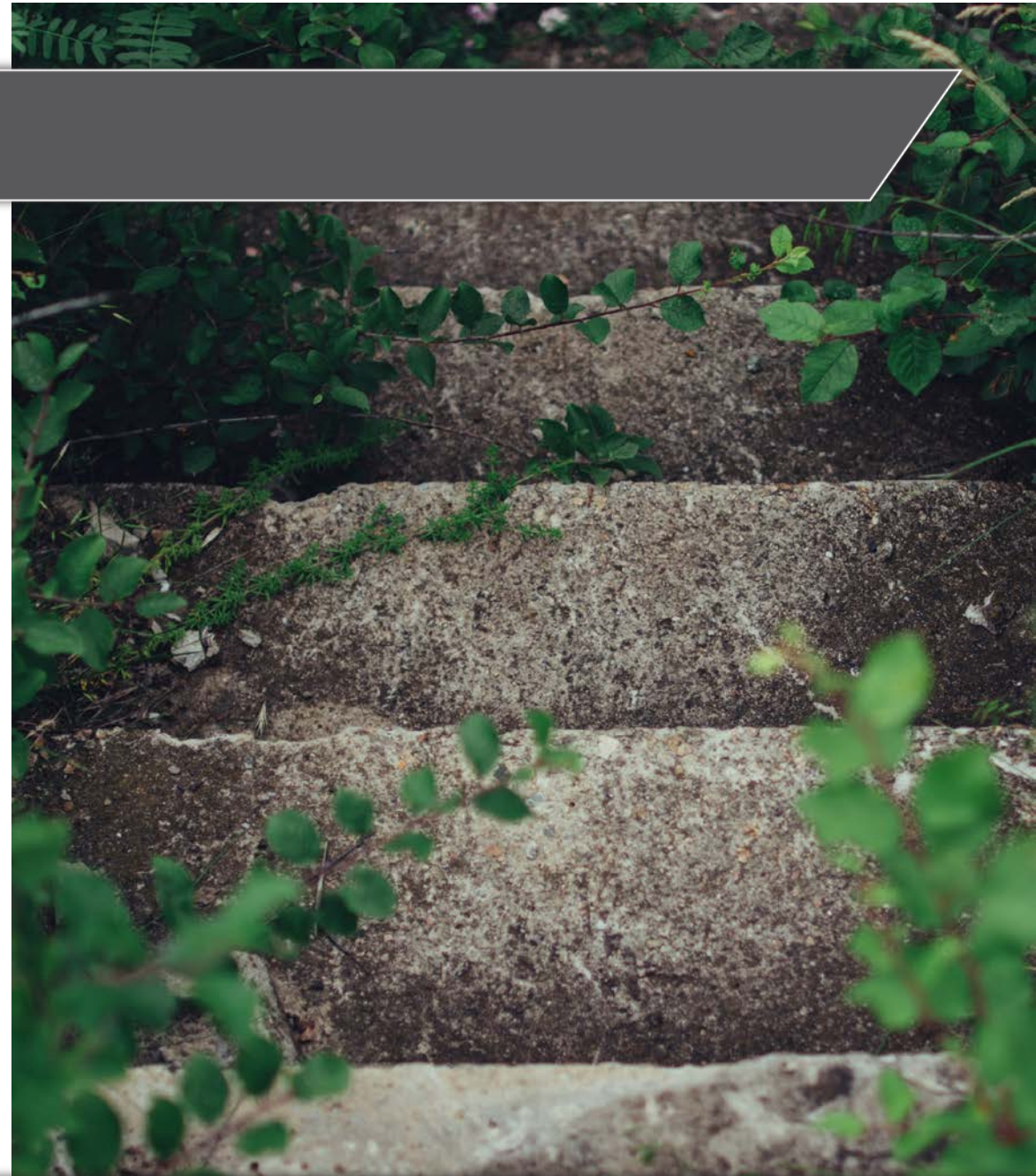
# Stormwater Runoff and Wastewater

- New actions added
  - **Action 3.1.3. Reduce Stormwater Runoff.** Reduce stormwater runoff through implementation of a stormwater diversion project to divert all dry weather flows and first flush runoff to the large sanitary sewer that runs along San Antonio Avenue, such that they can be directed to the Wastewater District.
  - **Action 3.1.9. Wastewater Treatment.** Collaborate with the Carmel Area Wastewater District (CAWD) to increase the facility's resilience to sea level rise and stronger storms, and incentivize reduction of water use in the community and transitioning to reclaimed water use for irrigation. Maintain staff/council personnel as liaisons to CAWD.



# Next Steps

- **Present** the goals, policies, and actions at the November 18<sup>th</sup> public workshop
- **Collect** comments from the public
- **Refine** the goals, policies, and actions based on public and climate committee comments



Thank you for  
your time!

Questions?

rincon

