



rincon

RINCON CONSULTANTS, INC.

Environmental Scientists | Planners | Engineers

City of Carmel-by-the-Sea

Climate Adaptation Goals, Policies, and Actions

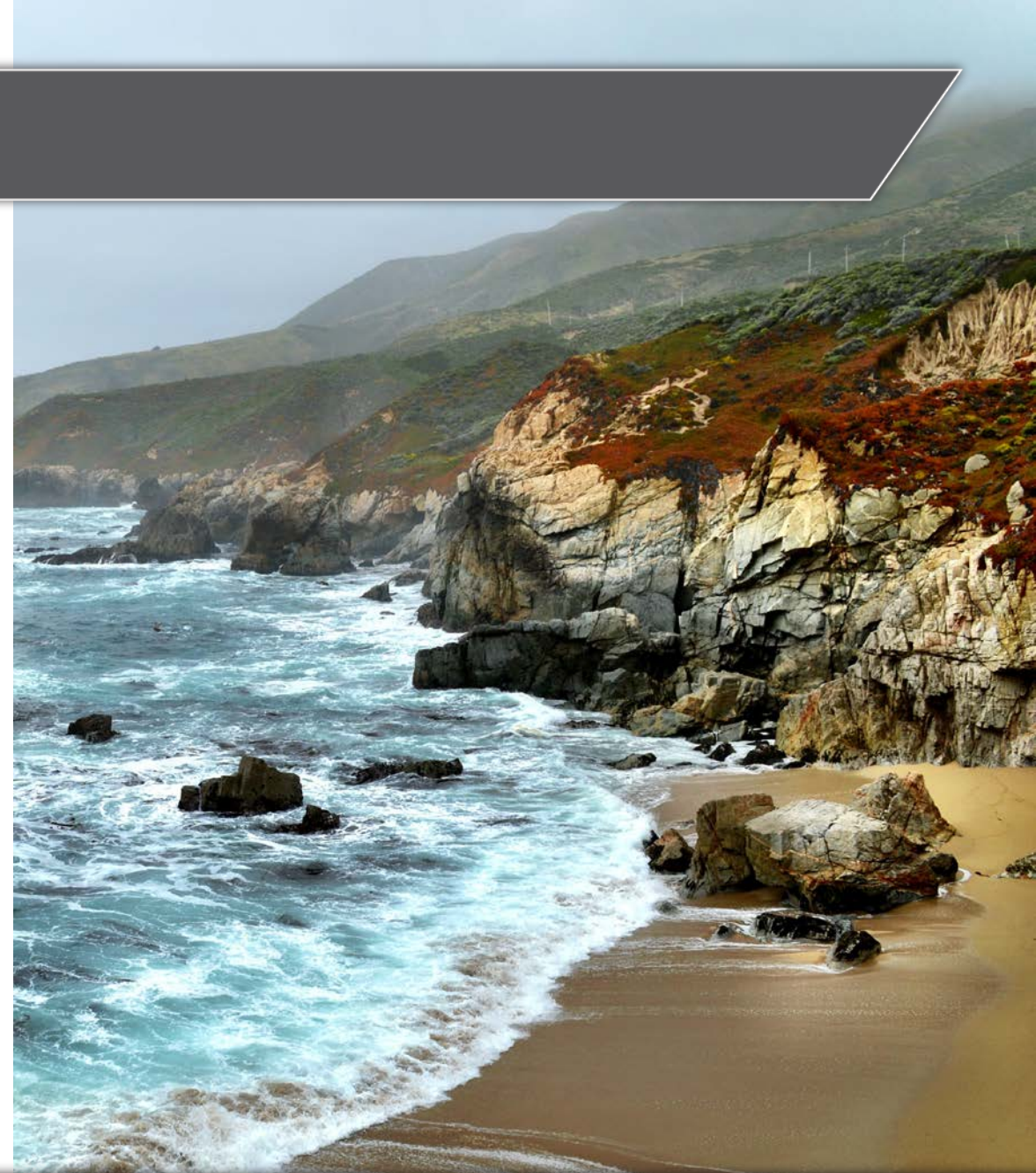
Climate Committee Meeting

- Progress to date
- Comments from 11/18/21 Public Workshop & how they were addressed
- Additions to the Adaptation Strategy
 - Timeframe, lead, costs
- Next Steps
- Questions/Discussion



Progress to Date

- Draft Adaptation Strategy developed (Aug)
- Updated Draft Adaptation Strategy based on Climate Committee comments (Sept/Oct)
- Revised Draft Adaptation Strategy shared at 11/18/21 public workshop
- Adaptation Strategy refined based on comments from public workshop
 - Timeframe, lead, and costs added to Adaptation Strategy



11/18/2021 Public Workshop Comment Categories

- Evacuation and senior residents
- Apply updated City Planning Guidelines and Development Standards citywide (not just in the VHFHSZ)
- Support for more partnerships in engagement efforts
- Need for a grant writer
- Desire for more specific actions
- Support for policies/actions already in place (e.g., evacuation, vulnerable communities, Firewise Community certification, and more)



Evacuation and Senior Residents

- A clear evacuation plan for seniors in the community was suggested.
- **Action 1.1.1** revised:
 - **Action 1.1.1. Maintain and Update Evacuation Plan.** Maintain and update an Evacuation Plan every 8 years at a minimum to account for all types of emergencies. The plan should focus on the most vulnerable groups including the elderly community.



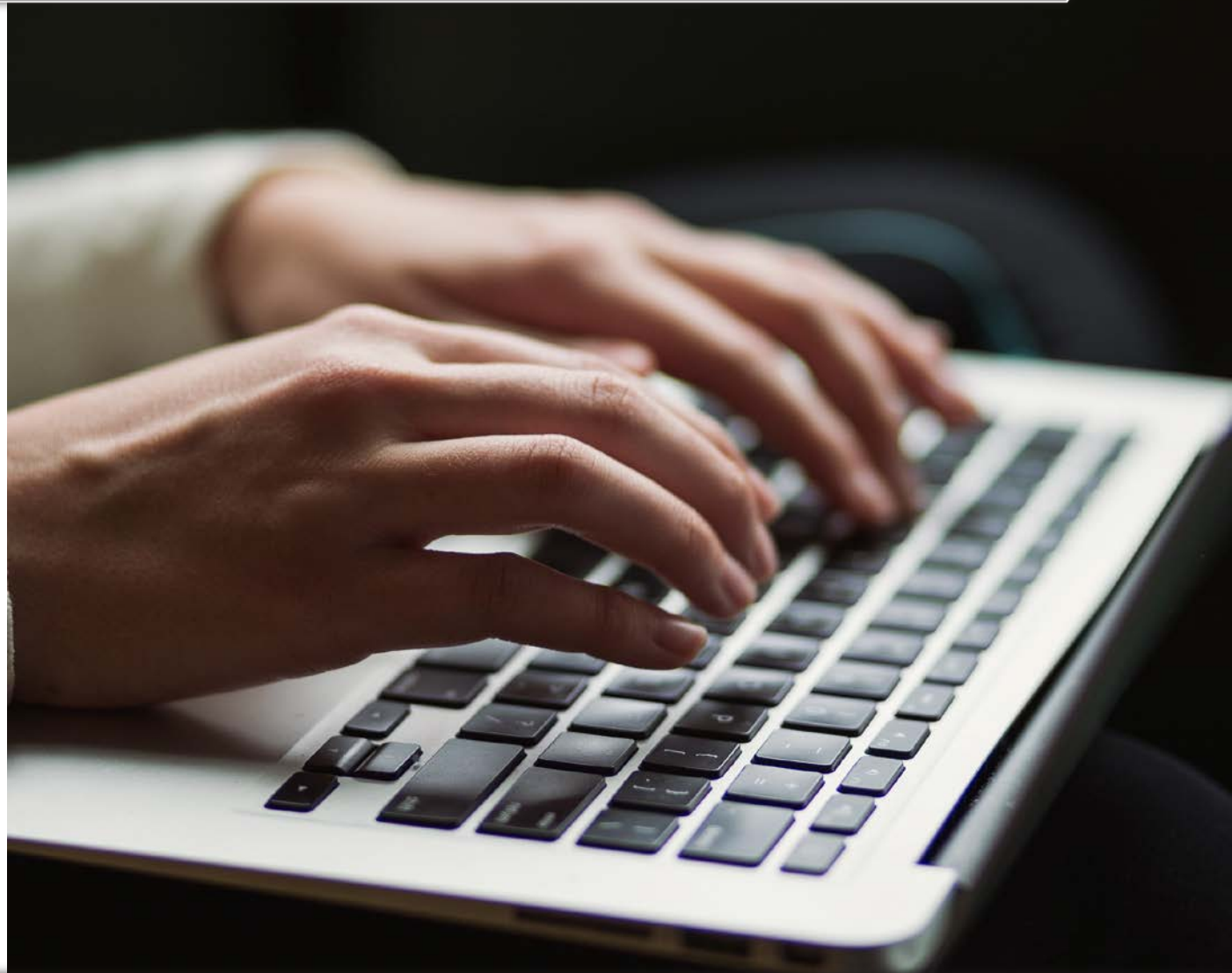
Planning Guidelines and Development Standards

- It was suggested that City Planning Guidelines and Development Standards apply citywide rather than only in the Very High Fire Hazard Severity Zone (VHFHSZ)
- Actions revised:
 - **Action 1.1.8. Update City Planning Guidelines.** Update the City's municipal code to maintain consistency with current California codes (California Building Code Chapter 7 and California Residential Code R337) throughout the City.
 - **Action 1.1.9. Development Standards.** Evaluate City's development standards for consistency with best practices for reducing wildfire risk for both new and existing development, including but not limited to incorporating defensible space design in landscaping guidelines.

More Partnerships for Engagement

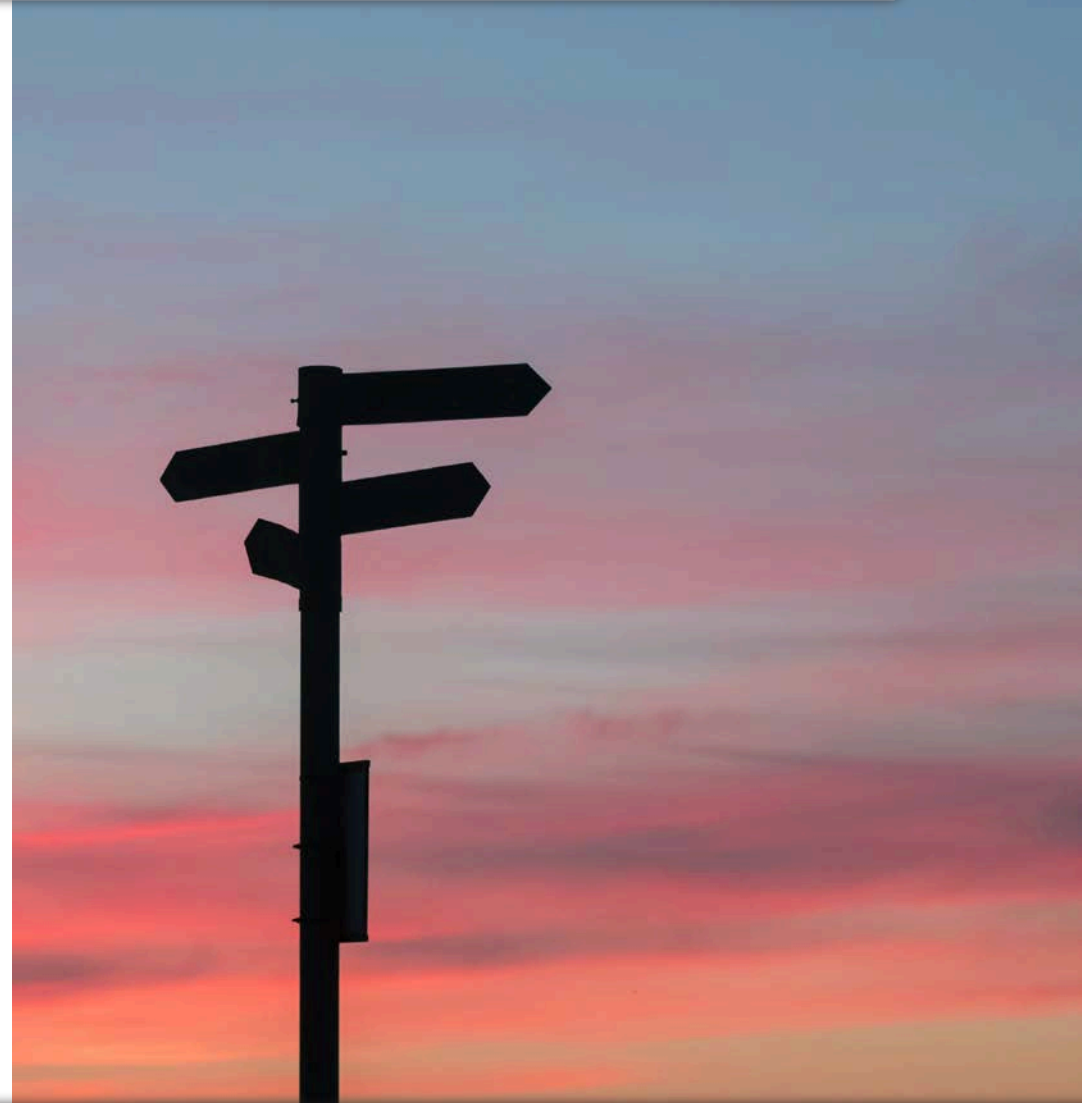
- Many additional potential outreach partnerships and ideas for new outreach methods suggested.
- Examples of Actions revised:
 - **Action 1.1.3. Collaborate with Monterey Fire.** Collaborate with Monterey Fire on its inspection and outreach efforts to reduce fire risks. Continue to coordinate with the CERT program and reach out to new potential outreach partners such as local businesses, community groups, and utilities to help distribute information to increase resident and homeowner awareness and knowledge of how to prepare for emergencies.
 - **Action 1.2.3. Engage the Community.** Ensure the community knows about the resilience hub and how to access it by sharing updates across city and community channels. Partner with the CERT program and block captains, and community groups, to prioritize disadvantaged/marginalized communities including the elderly and individuals with disabilities.

- Action added
 - **Action 1.4.4. Hire a Grant Writer.** Hire a grant writer to ensure implementation of the City's adaptation strategy.



Desire for More Specific Actions

- Actions are specific while still leaving room to refine based on new information received during the implementation process.
- Specific examples of potential projects will be included under select actions in the Carmel Climate Change Adaptation Plan.

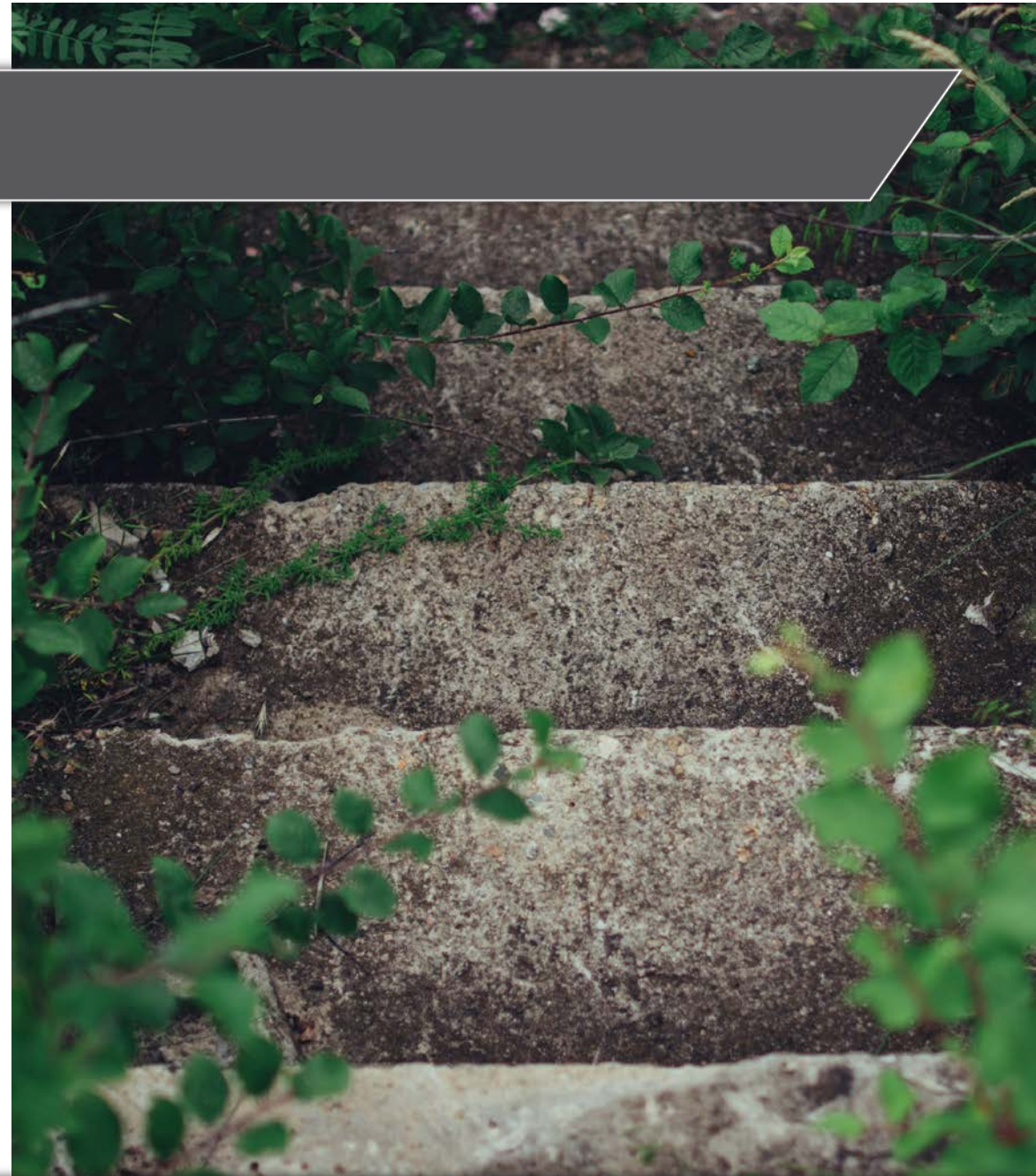


Additions to the Adaptation Strategy

Timeframe	Potential Lead	Cost
Near-term (1-2 years); Mid-term (3-5 years); Long-term (5-10 years)		\$-Low (<\$50K); \$\$-Medium (\$50K - \$100K); \$\$\$-High (>\$100K)
Near-term and Ongoing	Police & Fire	\$

Next Steps

- **Prepare** Adaptation Report January - February
- **Share** Adaptation Report with Climate Committee in March
- **Present** Adaptation Report to Commissions and City Council for feedback and approval April - May



Thank you for
your time!

Questions?

rincon

